

2009_JI_A_2D_numerical_model _of_Salinity_distribution_patter. pdf *by*

Submission date: 08-Dec-2021 12:53PM (UTC+0700)

Submission ID: 1724170979

File name: 2009_JI_A_2D_numerical_model_of_Salinity_distribution_patter.pdf (1.24M)

Word count: 3744

Character count: 19701

Research Paper/Technical Note/Review Article

A 2d numerical model of salinity distribution pattern on the estuary of Jeneberang River

Riswal Karamma ¹, Muhammad Saleh Pallu ², Muhammad Arsyad Thaha ³, and Mukhsan Putra Hatta ⁴

ARTICLE INFORMATION

Article history:

Received: 03 February, 2020
Received in revised form: 20 June, 2020
Accepted: 27 June, 2020
Publish on: 06 September, 2020

Keywords:

Hydrodynamics
Salinity
Jeneberang River

ABSTRACT

Hydrodynamic factors and aquatic environment at the mouth of the Jeneberang River are a major concern for the management of coastal areas and estuaries because can affect estuary utilization activities. This study uses a two-dimensional numerical model to reveal the dynamic and physical characteristics of the waters during the dry season at the mouth of the Jeneberang River. Measurements of tides, flow velocity, temperature and salinity were carried out prior to using numerical modeling to describe the tidal-driven flow circulation. The simulation model shows that the salinity distribution pattern follows the flow pattern so that it affects the distribution of the salinity distribution. The modeling results show a decrease in salinity downstream of the Jeneberang River estuary. The upstream part has a relatively high salinity compared to the downstream part, between 36.4 PSU - 36.8 PSU. The downstream part of the water has a salinity level ranging from 34.5 PSU - 35 PSU showing a fairly dynamic salinity pattern. Based on the spatial distribution, this area is a mixed area with the farthest distance is between 850 meters to 1050 meters from the mouth of the estuary of the model domain area.

1. Introduction

There are several hydrodynamic factors that need to be considered in the management of coastal areas, namely wind, currents, tides, river estuaries, erosion, abrasion, and sedimentation. [1,2,3]. The use of the coastal area at the mouth of the Jeneberang River has long been used by the surrounding community for transportation, fisheries and so on. River estuaries are transitional areas between land and open seas, so that there is an interaction between the two [3]. The Jeneberang River which empties into the coast of Makassar City has an important role in providing raw water, shipping and controlling floods in Makassar City and Kab. Gowa. The water conditions in the estuary are

very dynamic due to influences such as strong river currents and tides, which impact on flow circulation patterns, salinity, the level of mixing of salt water and fresh water and sedimentation [4,5,6]. Tidal propagation into the estuary is accompanied by changes in temperature and salt water intrusion, it is important to know the dynamics in the estuary. Water dynamics and salinity distribution due to tidal influence and river geometric factors can be seen with numerical modeling approaches [7,8,9]. Models can provide a simple description of the real system to help solve a problem (Thomann, 1987; Jorgensen, 1994 in Zaman and Syafrudin, 2007) [10]. Rizal, *et al.* 2009 says the modeling is designed on a desired boundary condition to approach the actual state. Several models have been

¹ Department of Civil Engineering, Hasanuddin University, Jl. Malino, Gowa Regency, Indonesia riswalchiwal@gmail.com

² Department of Civil Engineering, Hasanuddin University, Jl. Malino, Gowa Regency, Indonesia

³ Department of Civil Engineering, Hasanuddin University, Jl. Malino, Gowa Regency, Indonesia

⁴ Department of Civil Engineering, Hasanuddin University, Jl. Malino, Gowa Regency, Indonesia

Note : Discussion on this paper open until March 2021

applied to both open and closed boundary conditions [11]. The equations describing flow in rivers, estuaries and water bodies are based on the concepts of mass and momentum conservation. The 2D horizontal (flow equation is *depth averaged*) derived by integrating the three-dimensional equation of mass and momentum transport with respect to the vertical coordinates from the bottom to the water surface, assuming that the vertical velocity and acceleration are negligible and the salinity concentration is the same for each depth [11]. 2D *flexible mesh* numerical model is a numerical model solution based on *flexible mesh* with ease of resolution in configuring *coastlines* and bathymetry [11, 12,13,14]. Understanding the importance of managing the estuary area requires sustainable management. One of the environmental aspects that is important to know so that the management of the estuary area can be implemented properly is to understand the dynamics of the waters. T₁ide, bathymetry, flow velocity and salinity surveys₂ were carried out at the mouth of the Jeneberang River. This study aims to model the current circulation patterns and salinity in the estuary of the Jeneberang River that are generated by tides. It is hoped that the benefits from the research results can be used as input in environmental management around the Jeneberang River estuary area.

2. Research Methodology

3.1 Research Location and Time The research

Location was at the mouth of the Jeneberang River, Makassar. Geographically, the location of the model is at the coordinates of UTM 50S UTM 763000m E 767000m E and 9426000m S-9426000m S. Data retrieval and recording were carried out from October 1, 2019 - November 11, 2019.



Fig 1. Model Domain Location

3.2 Research Flow

The methodology in this study consists of data collection, model design, model simulation, model validation of measurement data, and tidal dynamics analysis of the model simulation results. The illustration of the methodology flow chart in this study can be seen in Fig. 2

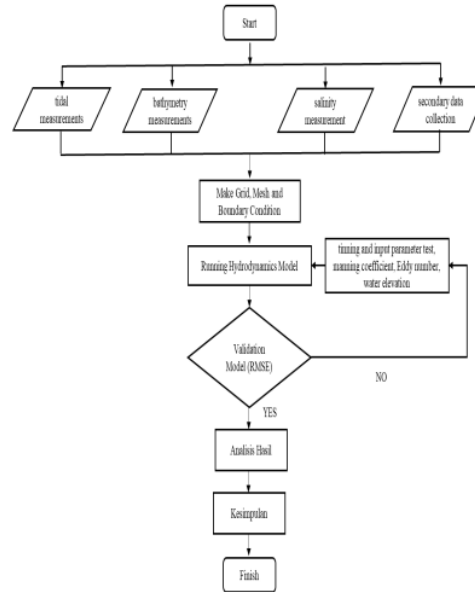


Fig 2. Flowchart of research methodology

2.3 Hydrodynamic model

The movement of water masses in waters can be approximated by using the law of conservation of mass (continuity) and conservation of momentum. 2D *flexible mesh* numerical model is a numerical solution to a model based on *flexible mesh* with easy resolution in configuring *coastline* and bathymetry. The solution to the numerical calculations in this module can be applied to the estuary environment. two-dimensional numerical solution *Reynolds' incompressible* to the mean of the *Navier - Stokes equation* which consists of the basic equations of mass conservation and conservation of momentum, salinity, in 2D solutions using sigma coordinate transformations. In this study, a 2-dimensional hydrodynamic numerical model is used to simulate the current circulation patterns and salinity. The horizontal integration of the momentum equation and the equation with respect to $h = \eta + d$ depth in two dimensions gives the

continuity equation for continuity:

$$\frac{\partial h}{\partial t} + \frac{\partial h\bar{u}}{\partial x} + \frac{\partial h\bar{v}}{\partial y} = hS \quad (1)$$

The equation for motion in the x and y directions:

$$\begin{aligned} \frac{\partial h\bar{u}}{\partial t} + u \frac{\partial \bar{u}}{\partial x} + v \frac{\partial \bar{u}}{\partial y} = F_{\bar{u}h} - gh \frac{\partial \eta}{\partial x} - \frac{h}{\rho_0} \frac{\partial \rho}{\partial x} - \frac{gh^2}{2\rho_0} \frac{\partial \rho}{\partial x} + \\ \frac{\tau_{sx}}{\rho_0} - \frac{\tau_{bx}}{\rho_0} + \frac{1}{\rho_0} \left(\frac{\partial s_{xx}}{\partial x} + \frac{\partial s_{xy}}{\partial y} \right) + \\ \frac{\partial}{\partial x} (hT_{xx}) + \frac{\partial}{\partial y} (hT_{xy}) hu_s \end{aligned} \quad (2)$$

$$\begin{aligned} \frac{\partial h\bar{v}}{\partial t} + u \frac{\partial \bar{v}}{\partial x} + v \frac{\partial \bar{v}}{\partial y} = -F_{\bar{v}h} - gh \frac{\partial \eta}{\partial y} - \frac{h}{\rho_0} \frac{\partial \rho}{\partial y} - \frac{gh^2}{2\rho_0} \frac{\partial \rho}{\partial y} + \\ \frac{\tau_{sy}}{\rho_0} - \frac{\tau_{by}}{\rho_0} + \frac{1}{\rho_0} \left(\frac{\partial s_{yx}}{\partial x} + \frac{\partial s_{yy}}{\partial y} \right) + \\ \frac{\partial}{\partial x} (hT_{xy}) + \frac{\partial}{\partial y} (hT_{yy}) hv_s \end{aligned} \quad (3)$$

Where the solution indicates the value of the mean depth, which is the velocity at the mean depth given by:

$$h\bar{u} = \int_{-d}^{\eta} u dz, \quad h\bar{v} = \int_{-d}^{\eta} v dz \quad (4)$$

Where :

t	= time (sec)
x, y, z	= direction in Cartesian coordinates
η	= water level elevation (m)
d	= water depth (m)
$h = \eta + d$	= total depth (m)
ρ	= density of water (kg.m ⁻³)
ρ_0	= density at initial conditions (kg.m ⁻³)
u, v	= velocity component in the direction x, y
$f = 2\Omega \sin \phi$	= coriolis parameter
g	= Acceleration due to gravity (m / s ²)
\bar{u}, \bar{v}	= component of current velocity averaged against depth in the direction x, y (m.det-1)
τ_{bx}, τ_{by}	= Stress base for direction-x direction-y (m.sec-2)
T_{xx}, T_{xy}, T_{yy}	= shear stress (m.sec ⁻²)

Equations (2) and (3) contain the local velocity change term, the convective term, the coriolis affected term, the pressure gradient, the stress basic, and the turbulence term. The coriolis term is not used because the study area is relatively small and is located around the equator.

2.4 Model Design.

2.4.1 Boundary Condition Builder of Numerical Model

This modeling uses three types of boundary conditions, and is implemented in the domain model [15,16]. The boundary conditions used are:

1. Sea Level Boundary Requirements, numerical modeling 2D *flexible mesh* has certain boundary conditions at sea level ($z = \eta$)

2. Sea Level Boundary Requirements, 2D numerical modeling has certain boundary conditions on the seabed ($z = -d$).
3. Closed boundary conditions, closed boundaries are boundary conditions used at the meeting between sea and land. At this limit it is assumed that no current is perpendicular to the closed limit. (DHI, 2010; Sprintall *et al.*, 2014; Gao *et al.*, 2015) [15,16]

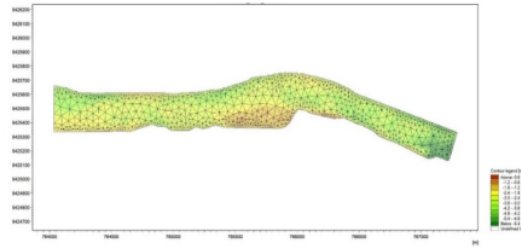


Fig 3. Numerical modeling domain of the Jeneberang River estuary with flexible mesh elements: 10000 m

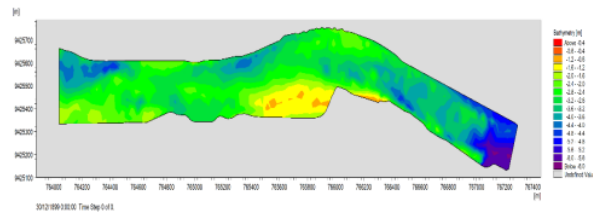


Fig 4. Bathymetry resulting from triangular flexible mesh interpolation, domain model of the Jeneberang River estuary with a depth range of 0 to -6.0 meters.

2.4.2 Numeric Model Builder Input Variables (Input Data)

In the modeling analysis, there are some data used as input. These data are:

- a. Coastline

Data This data is obtained from Landsat 8.0 satellite imagery data for the Makassar waters, focused on the waters of the Jeneberang River estuary. The coastline determines the closed boundary conditions model, which represents the meeting between sea and land or can be used as a dry area.
- b. Bathymetry

Data This data is data obtained from bathymetry generalization data, which was carried out during the implementation of field investigations, the data used is also bathymetric data that has been corrected for elevation changes.
- c. Tide Elevation Data

The tide elevation data used is obtained from the tide logs using a *tide logger*. The tidal data will be used as the boundary of open conditions from

2D modeling, which *flexible mesh* is the extraction of the harmonic components from the implementation of measurements carried out in the field.

d. Salinity

Data The salinity data is obtained from the results of measurements using the CTD instrument, these results are the existing conditions. Next is a spatial representation of the existing distribution conditions, numerical modeling studies approach the *initial condition 0*.

2.5 Numerical Modeling Validation Analysis

Model validation is done by comparing the value of the modeling results with the value of the measurement investigation in the field. This is necessary to decide the model results have relative errors so that they can be used for further needs. The level of error (*error probability*) is carried out using the equation 5 approach.

$$\text{Error} = \frac{1}{N} \sqrt{\left[\sum_{i=1}^N \left| \frac{x_s - x_d}{x_d} \right|^2 \right]} \times 100\% \quad (5)$$

with, x_s the value of the simulation result; x_d measured value; N is the amount of data.

3. Results and Discussion

3.1 Model Validation

Results of the 2D numerical modeling validation analysis *flexible mesh* can be seen in Figure 5 - Figure analysis 8. Results of RMSE root mean square error, the model error value for tidal recording measurements at station 1 is 2.26% and station 2 is equal to 5.47%. The magnitude of the error value for the current measurement value with the modeling results is *u-velocity* of 9.7% and *v-velocity* of 4.8%. The current distribution pattern of the two results between modeling and measurement in the form of a pattern *sinusoidal* in Figure 8 shows that the current movement results from measurement and modeling are East - West, the measurement results also show that the component of current velocity that moves during measurement is dominated by the East - West component (*u velocity*) can be seen in Fig 7.

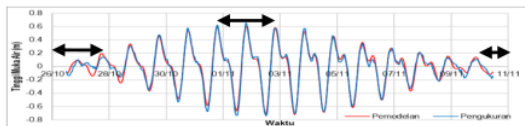


Fig 5. Graphic analysis of water level validation modeling and recording at the location of station 1, the mouth of the Jeneberang River

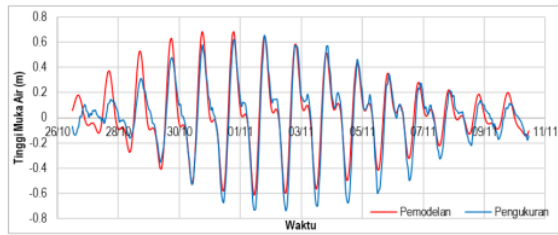


Fig 6. Graph of the analysis of the water level validation modeling and recording at the location of station 2, the mouth of the Jeneberang River

3.2 Simulation Results of Tidal Flow Patterns

After verification of the model is carried out, flow simulations are carried out. The current simulation result is a value that is averaged over the depth (2D). Based on this simulation, information is obtained about the current circulation pattern based on the tidal conditions that occur.

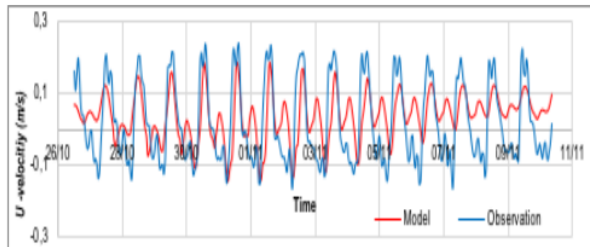


Fig 7. Graph analysis of the validation component of velocity (u-velocity) modeling and recording at the mouth of the Jeneberang River.

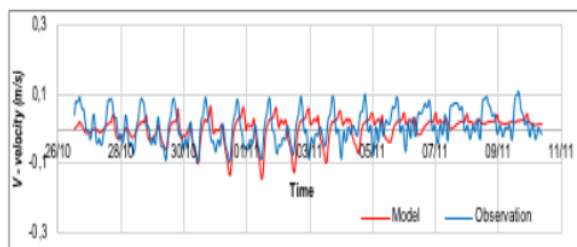


Fig 8. Graph validation analysis of velocity components (v-velocity) modeling and recording at the mouth of the Jeneberang River

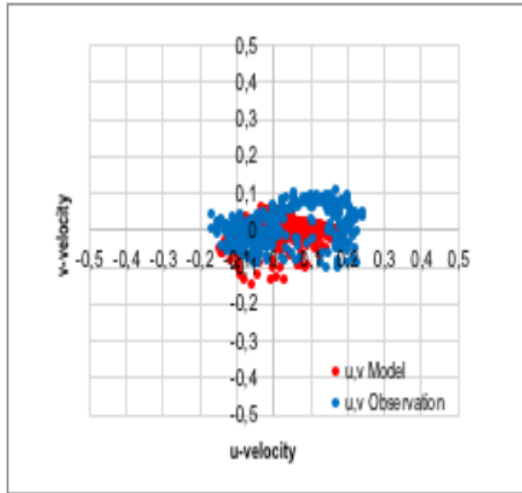


Fig 9. Verify the flow of model results with field measurements

Modeling results show that when the *spring tide* is at low tide, the current velocity is 0.16m / s - 0.2 m / s and at low tide the current velocity is 0.21 m / s - 0.25 m / s. When the *neap tide* is at low tide, the current velocity is 0.06m / s - 0.2 m / s and at low tide the current velocity is 0.16m / s - 0.2 m / s.

3.3 Current Circulation Patterns and Salinity

2D numerical modeling simulation is *flexible mesh* carried out with the salinity parameter as one of the water masses with two time conditions, the condition when ($t = 0$) the salinity value *fresh water* (~ 0 PSU), and the condition ($t = 1$) the condition during the simulation after it occurs. mixing along the estuary canal of the Janebarang River, resulting in spatial stratification along the river canal. The condition $t = 1$ is the time condition where the water has entered upstream of the canal from the mouth of the Janebarang River, in other words, the mouth of the Janebarang River completely has the same salinity value as the open water conditions in the Makassar Sea waters. The simulation is continued from $t = 1$ to $t = n$, so that it fulfills the existing conditions.

The low tide elevation towards the tide during *spring tide* and *neap tide* gives the same pattern even at the neap tide with a lower magnitude. Salinity moves in from upstream to downstream due to current transport in the range of 36.75 PSU - 37 PSU, can be seen in Figure 11 and Figure 13 elevation towards *spring tide*. At *tideneap tide*, the current moves toward the ebb, causing a number of current vectors to show movement to downstream. This results in a number of salinity moving out of the canal body of the river estuary with values ranging from 35 PSU - 36 PSU being downstream from the Janebarang River as in Figure 10 and Figure 12. This occurs due to the transport

force that encourages the mass of water to spread across the river. downstream from the Janeberang River canal.

3.3 Comparison of Salinity Measurement Results and 2D Numerical Modeling Results along the Janebarang River Estuary Survey Investigation Station

The comparison between the results of the salinity investigation survey at the mouth of the Janebarang River with the simulation results of 2D numerical modeling is *flexible mesh* shown in Figure 135. The comparisons were carried out for as many days as the investigative survey was carried out, namely for 15 days. The overall results show *trendline* a linear between measurement and modeling. These results indicate a decrease in salinity to the lower reaches of the Janebarang River estuary. The upstream part has a relatively high salinity compared to the downstream part, ranging from 36.4 PSU to 36.8 PSU. The lower reaches of the waters have salinity levels ranging from 34.5 PSU to 35 PSU. *Trendlines* at stations 4, 5, and 6 show a fair salinity pattern dynamic with the previous salinity values. This indicates that the spatial distribution of this station is a area mixed. Stations 4, 5 and 6 are stations quite close to the downstream with the farthest distance is between 850 meters to 1050 meters from the downstream end of the model domain area. The events that occur on the Janebarang River, with relatively low salinity in the downstream part, are likely to occur due to the accumulation of salinity in the middle to the upstream part of the canal since the weir was built.

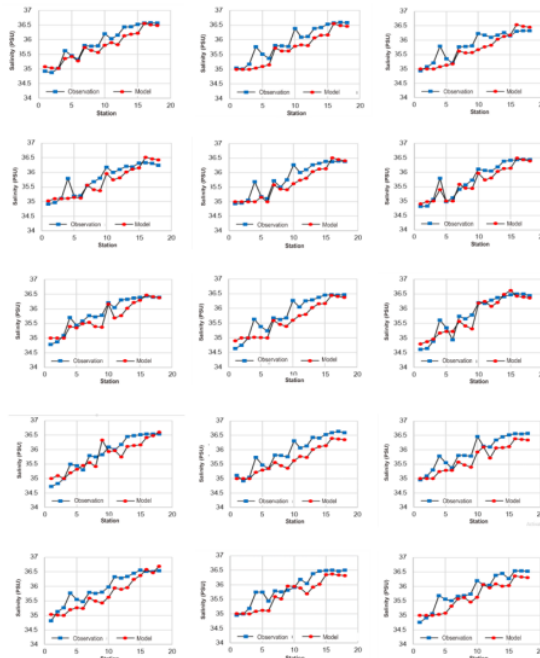


Fig 14. Salinity trendline measurement and modelling during the survey (15 days).

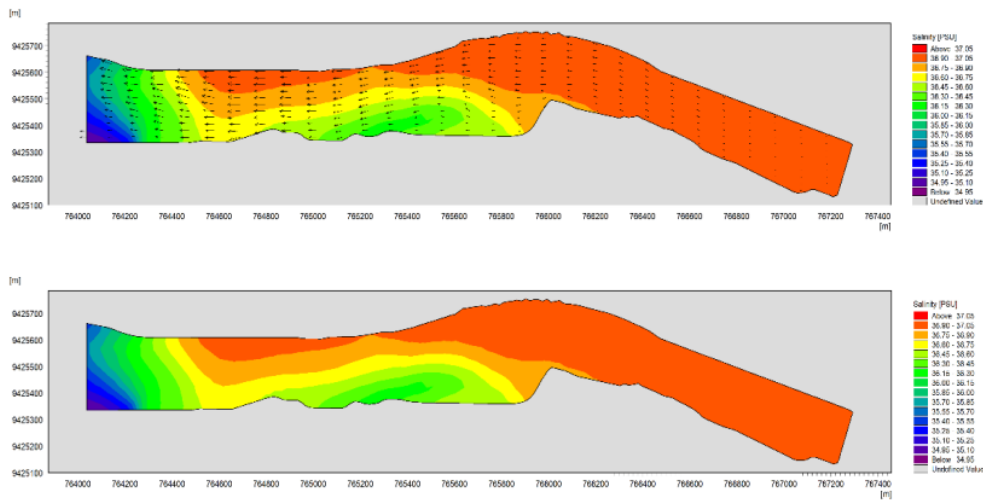


Fig 10. The plot profile of the salinity distribution at $t = 1$ tide elevation conditions towards low tide during the *spring tide* of the Janeberang River estuary. The top panel shows the current vector, and the bottom panel shows the salinity distribution.

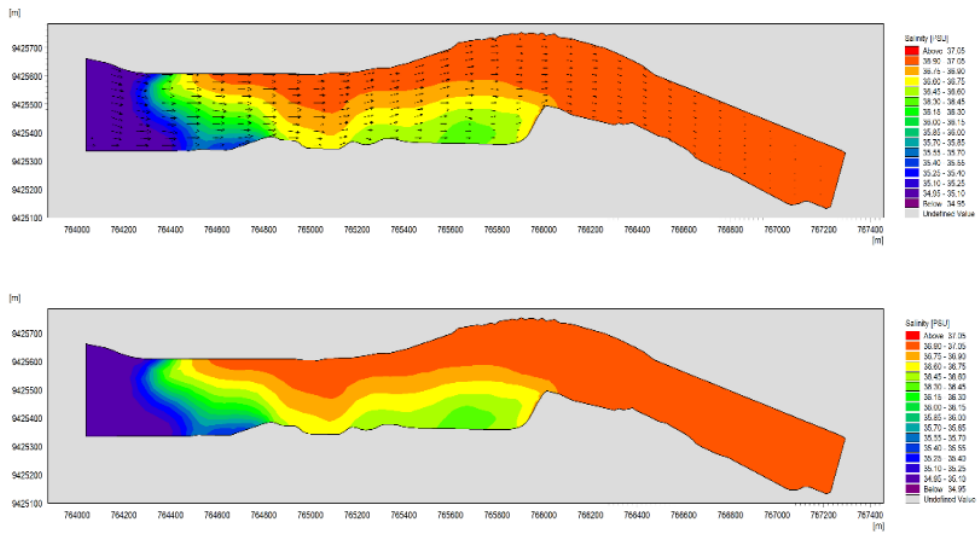


Fig 11. The plot profile of the salinity distribution at $t=1$, the elevation conditions recede to the tide during the *spring tide* of the Jeneberang River estuary. The top panel shows the current vector, and the bottom panel shows the salinity distribution.

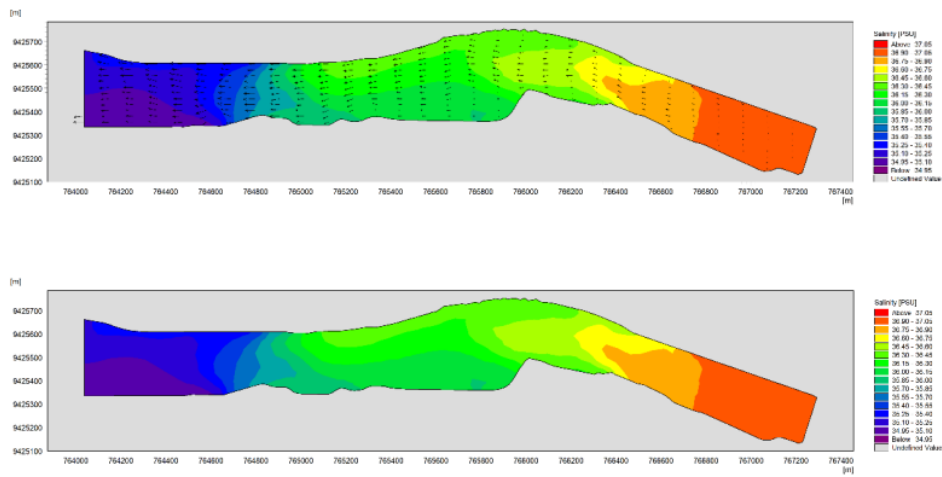


Fig 12. The plot profile of the salinity distribution at t = 1 tide elevation conditions towards low tide at neap tide, the location of the Jeneberang River estuary. The top panel shows the current vector, and the bottom panel shows the salinity distribution.

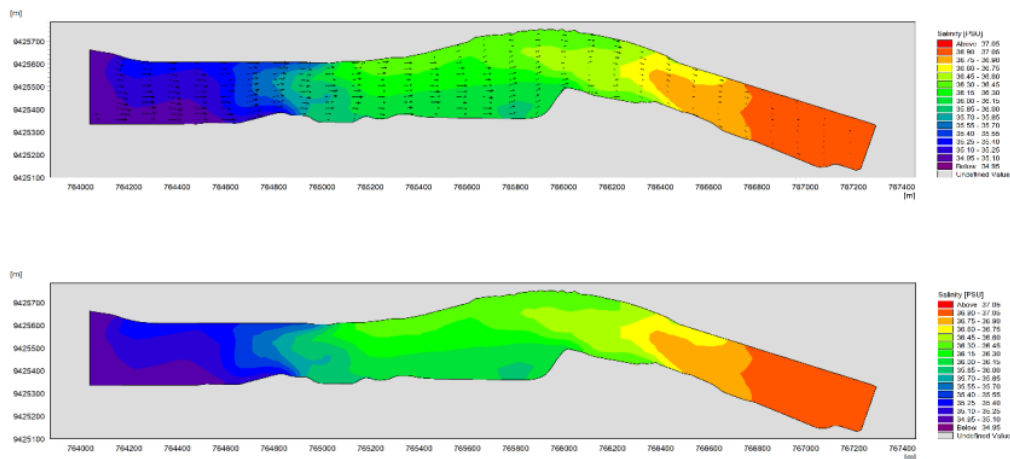


Fig 13. Plot profile of the salinity distribution at t = 1 tide elevation conditions recede to tide during neap tide bandages at the site of the mouth of the Jeneberang River. The top panel shows the current vector, and the bottom panel shows the salinity distribution.

4. Conclusion

The salinity equation function works on the momentum function in shallow water, resulting in changes in water depth which are directly proportional to changes in forces and salinity values. The circulating current velocity component gives the density difference. The difference in density is caused by changes in temperature and salinity of the water mass.

1. The modeling results show the current circulation pattern when the *spring tide and neap tide* show the suitability of the pattern, the difference is the magnitude of the current velocity. The current velocity at *spring tide* is higher than at *neap tide* with a current velocity of 0.21 m / s - 0.25 m / s.
2. The upstream part has a relatively high salinity compared to the downstream part, ranging from 36.4 PSU to 36.8 PSU. The lower reaches of the waters have salinity levels ranging from 34.5 PSU to 35 PSU.
3. At low tide elevation to high tide when *spring tide* and *neap tide* salinity gives the same pattern, ranging from 36.75 PSU - 37 PSU.
4. At low tide elevation during *spring tide and neap tide*, the current vector shows movement downstream encouraging the water mass to spread downstream of the Jeneberang River canal. The salinity value is between 35 PSU - 36 PSU.

References

- F. Maharani Fajrin, MR Musananfola, B. Hendrarto, "Characteristics of Abrasion and Its Effect on Coastal Communities in West Semarng," *Diponegoro Journal Of Maquares*, Vol. 5, No.2, 2016
- Prawiradisastra, S. "Abrasion Problems in the Coastal Areas of Indramayu Regency," *Natural Journal*, 8 (2): 42-46,2003
- Lopa, RT, Maricar, F., and Pahriansyah., "Study of the influence of tidal currents at the mouth of the Jeneberang River," *Journal of Final Projects*, 2016
- Hadikusumah, "Temperature and Salinity Variability in Cisadane Waters," *Makara Sains, Marine Dynamics*, Research Center for Oceanography, LIPI, Jakarta, 2008
- Jumarang, MI Muliadi, Ningsih, N. S, Hadi, S. and Martha, D. "Flow Circulation Patterns and Salinity of Kapuas River Estuary Waters, West Kalimantan," *POSITRON*, Volume 1 No. 1, pp. 36-42, 2011
- Salamun, "Gangsa River Seawater Intrusion," *Periodic Journal of Aquatic Engineering*, 14 (1): 1-14, 2008
- Sprintall, J., Arnold, LG, Ariane .K.-L., Tong, L., James, TP, Kandaga, P., and Susan, "The Indonesian seas and their role in the coupled ocean-climate system," *Nat. Geosci.*, 7: 487-492. doi: 10.1038 / ngeo2188, 2014
- Swandana, D. and Perwira, A., M., T. "Modeling Tidal Flow and Sediment Floating in the Belawan River Estuary" in *USU Civil Engineering Journal* Volume 6 Number 1. Medan: University of North Sumatra, 2017
- Poerbandono and Djunarsjah, E. 2005. *Hydrographic Survey*. PT. Refika Aditama, Bandung, 163 pages
- Zaman, B. and Syafrudin. "2-D Numerical Model (Lateral & Longitudinal) Distribution of Cadmium (Cd) Pollutants in Muara Sungai (Case Study: Muara Sungai Babon Semarang)," *PRESIPITASI Journal* Vol. 3 No.2 September 2007, ISSN 1907-187X
- Rizal, S., Ichsan S., et al. "Simulated Baroclinic Flow Patterns in Eastern Indonesian Waters Using Three-Dimensional Numerical Models." *Journal of Mathematics and Science*. Vol. 14, 2009
- Noor, Dian H., Nining SN, and Harun S, "Two-dimensional Numerical Model for Heavy Metal Transport in Tanjung Gerem Cilegon Waters," *Ocean Science*, Diponegoro University. Semarang, 2008
- T. Jansen, "Sedimentation, Salinity and Seawater Intrusion in the Profile of the Chikugo River Estuary, Japan [Sedimentation, salinity and seawater intrusion in Japan's Chikugo estuary]," *Scientific Journal of Media Engineering*, vol. 6, no. 2, Jul. 2016
- Deynoot, FJCG, "Analytical Modeling of Salt Intrusion in the Kapuas Estuary," Thesis Faculty of Civil Engineering And Geosciences Water Resources Management, Delft University Of Technology, 2011
- Siagian, Hendry & Sugianto, D & Kunarso, "Current Velocity Impacts from Interaction of Semidiurnal and Diurnal Tidal Constituents for Tidal Stream Energy in East Flores," *IOP Conference Series: Earth and Environmental Science*. 246. 012056. 10.1088 / 1755-1315 / 246/1/012056, 2019
- Siagian, Hendry & Sugianto, D & Kunarso, & Pranata, A, "Estimation of Potential Energy Generated From Tidal Stream in Different Depth Layer at East Flores Waters Measured by ADCP," *IOP Conference Series, Earth and Environmental Science*. 246. 012052. 10.1088 / 1755-1315 / 246/1/012052, 2019
- Byung Il Yoona, Seung-Buhm Wooo, "The Along-channel Salinity Distribution and its Response to River Discharge in Tidally-dominated Han River Estuary, South Korea," *Procedia Engineering* 116 (2015) 763 - 770, ScienceDirect, 8th International Conference on Asian and Pacific Coasts (APAC 2015)
- Karamma, R., Pallu, M. S., Arsyad Thaha, M., & Hatta, M. P. (2020). Numerical Modeling of Water Mass Structure Distribution at the Estuary Jeneberang River, Makassar. *International Journal of Advanced Research in Engineering and Technology (IJARET)*, 11(5).
- Karamma, R., Pallu, M. S., Thaha, M. A., & Hatta, M. P. (2020, January). Stratification model of seawater mass structure at the estuaries of Jeneberang River and Tallo River and the influences to current pattern in Makassar coastal areas. In *IOP Conference Series*:

- Earth and Environmental Science (Vol. 419, No. 1, p. 012132). IOP Publishing.
- Karamma, R., Pallu, M. S., Thaha, M. A., & Hatta, M. P. (2020, January). Observation pattern of water mass structure at Jeneberang river estuary. In IOP Conference Series: Earth and Environmental Science (Vol. 419, No. 1, p. 012126). IOP Publishing.
- Karamma, R., Pallu, M. S., Arsyad Thaha, M., & Hatta, M. P. (2020). Numerical Modeling of Water Mass Structure Distribution at the Estuary Jeneberang River, Makassar. International Journal of Advanced Research in Engineering and Technology (IJARET), 11(5).

ORIGINALITY REPORT

6%

SIMILARITY INDEX

2%

INTERNET SOURCES

5%

PUBLICATIONS

0%

STUDENT PAPERS

PRIMARY SOURCES

1	R Kamma, M S Pallu, M A Thaha, M P Hatta, M Ihsan. "Spatial mapping of water mass structure in the estuary of Jeneberang river", IOP Conference Series: Earth and Environmental Science, 2021 Publication	2%
2	Wei Zhang, Wenpeng Hong, Xu Jin. "Research on performance and control strategy of multi-cold source district cooling system", Energy, 2022 Publication	1%
3	R Kamma, M S Pallu, M A Thaha, M P Hatta. "Observation pattern of water mass structure at Jeneberang river estuary", IOP Conference Series: Earth and Environmental Science, 2020 Publication	1%
4	bioflux.com.ro Internet Source	1%
5	file.scirp.org Internet Source	<1%

6

Internet Source

<1 %

7

R Karamma, M S Pallu, M A Thaha, M P Hatta.
"Stratification model of seawater mass
structure at the estuaries of Jeneberang River
and Tallo River and the influences to current
pattern in Makassar coastal areas", IOP
Conference Series: Earth and Environmental
Science, 2020

Publication

<1 %

8

www.teses.usp.br

Internet Source

<1 %

Exclude quotes On

Exclude matches < 5 words

Exclude bibliography On